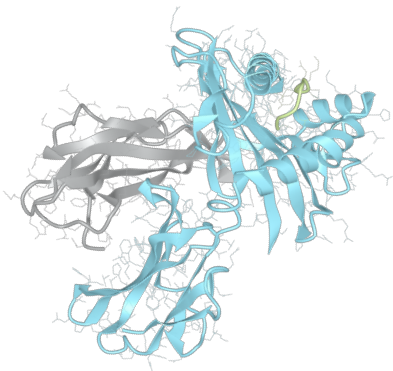


Product datasheet



sHLA-B*81:01bio

B*8101, B8101, B*81, B81, B81

Serological Name	B81
Peptide Load	Endogenous
Modification	Unmodified
Conjugation	Biotin
SKU	B8101bio

Product Description

Allele Name	B*81:01 B2m
HLA Class	HLA Class I
HLA Gene Locus	HLA-B
Alternative Allele Name A Chain	B*8101, B8101, B*81, B81, B81
Alternative Allele Name B Chain	-
Description	Recombinant, truncated Class I soluble Human Leukocyte Antigen (sHLA), naturally folded and glycosylated, loaded with endogenous peptides.
Serological Name	B81
Serological Split	-
Bw4/Bw6 Assignment	Bw6
Bw4/Bw6 Sequence	SLRNLRG
Allele Frequency [World Population]	
A chain	0.9%
B chain	-

Associated products

[B8101](#)
[B8101pe](#)

Product Specification

Product name	HLA-B*81:01bio
HLA Species	Human
Host Cell Line Species	Human
Clone Designation	F10C6
Tail Specification	VLDL
Peptide Load	Endogenous
Modification	Unmodified
Conjugation	Biotin
Complexity	Monomer
Protein Format	Recombinant, truncated, soluble, non-modified, biotinylated, endogenously loaded
Storage Temperature	4 °C (This product should be stored undiluted)
Form	Liquid
Concentration	300.0 µg/µl
Formulation	PBS/0.02% Sodium Azide
pH	7.4
Purification Method	Affinity Chromatography
Grade	Research Use Only [RUO]
Authentication Verification	Sequence Based Typing

Protein Sequences

Alpha Chain Sequence	GSHSMRYFYT SVSRPGRGEP RFIISVGYVDD TQFVRFDSDA ASPREEPRAP WIEQEGPEYW DRNTQIYKAQ AQTDRSLRN LRGYYNQSEA GSHTLQSMYG CDVGPDRLL RGHNQYAYDG KDYIALNEDL RSWTAADTAA QISQRKLEAA RVAEQLRAYL EGECVEWLRRL YLENGKDKLE RADPPKTHVT HHPISDHEAT LRCWALGFYP AEITLTWQRD GEDQTQDTEL VETRPAGDR FQKWTAVVVP SGEEQRYTCH VQHEGLPKPL TLRVSVSTDD DLA
Beta Chain Sequence	IQRTPKIQVY SRHPAENGKS NFLNCYVSGF HPSDIEVDLL KNGERIEKVE HSDLSFSKDW SFYLLYYTEF TPTEKDEYAC RVNHVTLSPQ KIVKWRDRM

Related Products

[A0201bio](#)
[A0301bio](#)
[A2402bio](#)
[B0702bio](#)

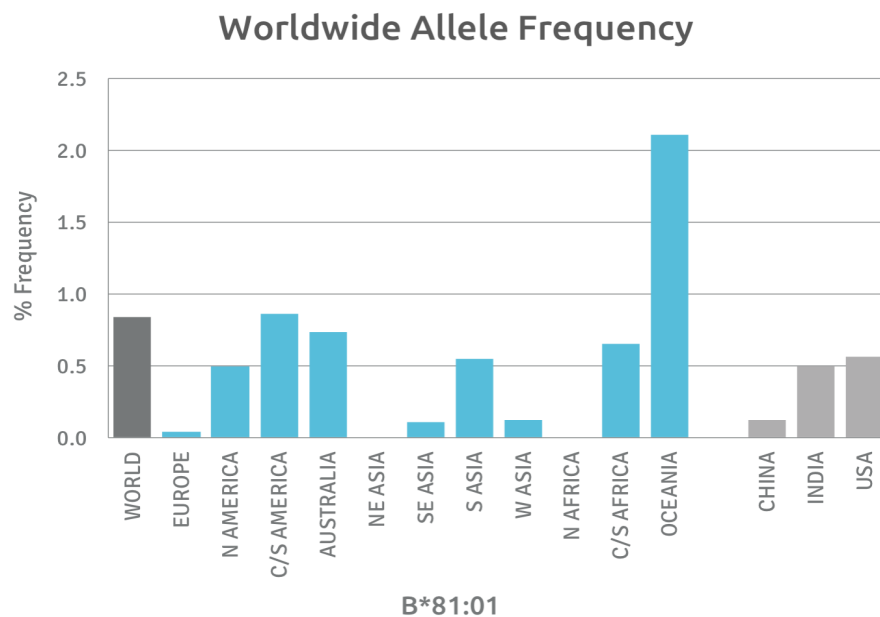
Applications

HLA Sandwich ELISAs
HLA Direct ELISAs
HLA-Sera Antibody Assays
HLA Controls in ELISA Assays
HLA Assay Standards
HLA Blocking Assays
HLA Neutralizing Assays
HLA Competition Assays
HLA Bead Assays
HLA Immunization Procedures

Recommended Antibodies

W6/32
Anti-B2m

Allele Frequency



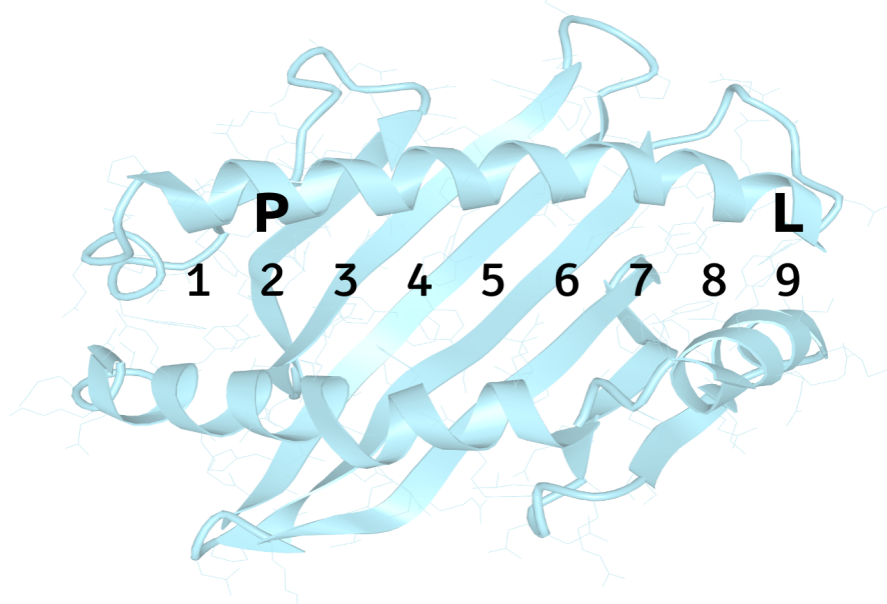
Please note:
ALL PRODUCTS ARE FOR RESEARCH USE ONLY. NOT FOR COMMERCIAL USE IN DIAGNOSTIC PROCEDURES.
For more information, please visit our Policies section on our website. For licensing inquiries, please contact

licensing@hlaprotein.com



Motif

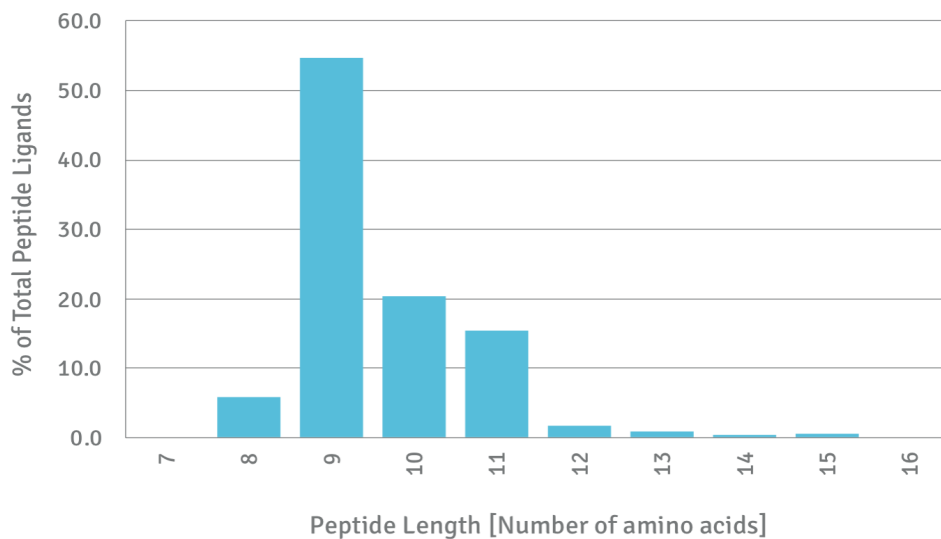
B*81:01 BINDING MOTIF



Length Distribution

HLA Length Distribution

B*81:01



Please note:

ALL PRODUCTS ARE FOR RESEARCH USE ONLY. NOT FOR COMMERCIAL USE IN DIAGNOSTIC PROCEDURES.

For more information, please visit our Policies section on our website. For licensing inquiries, please contact

licensing@hlaprotein.com

Eplet Assignments

B*81:01

Eplet	Polymorphic Residues	Antibody Reactivity
9Y	9Y	
24S	24S	
45EE	45E46E	
62RN	62R63N	
63NI	63N66I	
65QIA	65Q66I69A	Yes
66I	66I	
66IY	66I67Y	
69AA	69A71A	Yes
70IAQ	66I69A70Q	Yes
76ES	76E77S	
76ESN	76E77S80N	Yes
77S	77S	
77SRN	77S79R80N	
80N	80N	Yes
95L	95L	
97S	97S	
99Y	99Y	
113H	113H	
113HN	113H114N	
116Y	116Y	
143S	143S	Yes
147L	147L	
151ARV	150A151R152V	
152V	152V	
156L	156L	
163E	163E	
163EW	163E167W	Yes
177DK	177D178K	
180E	180E	Yes
193PI	193P194I	
245TA	245T246A	